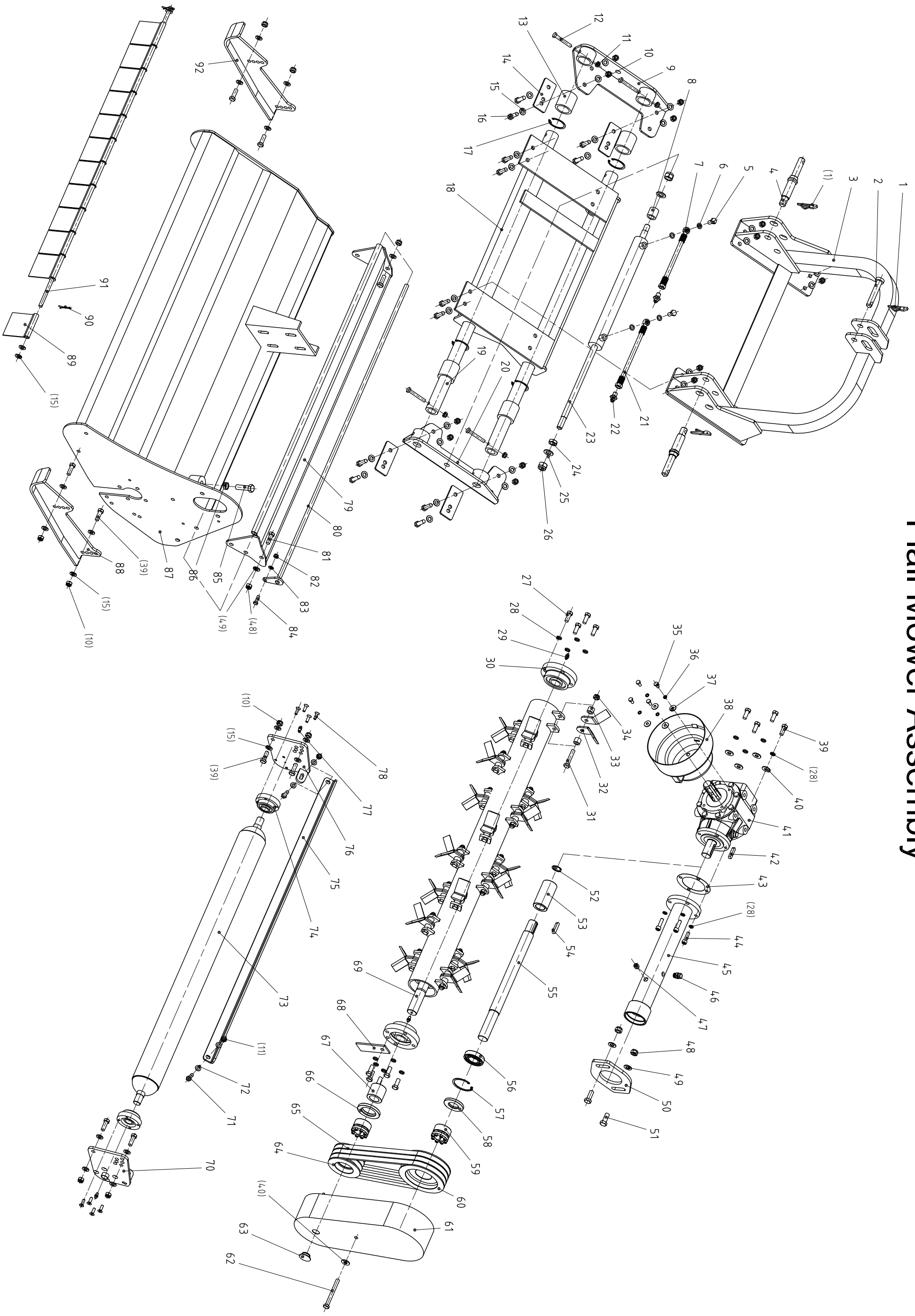


# Flail Mower Assembly



VFLAH125割草机

序号	零件代号	零件名称	数量	备注	
1		Lock pin	锁销	3	
2	IG180.117	Upper suspension pi	上拉杆销	1	
3	VFMH125.012	Suspension weldmer	悬挂焊合件	1	
4	VFSH200.101	Lower suspension pi	下悬挂销	2	
5	GB3451-83	Bolts M12*1.25	铰接螺栓M12X1.25	2	
6	GB3451-83	copper washer	铜垫圈12	4	
7	VFMH125.016	oil pipe	油管	1	
8	VFSH200.104	Spacer	隔套	1	
9	VFSH200.022	left connecting fram	左连接架焊合件	1	
10	DIN985	Lock nut M12	锁紧螺母M12	24	
11	DIN985	Lock nut M10	锁紧螺母M10	6	
12	GB5782-86	Bolt M10x70	螺栓M10X70	4	
13	VFSH200.109	Nylon sleeve	尼龙套	4	
14	VFSH200.102	Splint	夹板	4	
15	GB97.1-85	washer12	垫圈12	54	
16	GB5783-86	bolts M12*40	螺栓M12X40	16	
17	GB893.1-86	Ring 80	挡圈60	4	
18	VFMH125.013	Side shift frame	滑移架焊合件	1	
19	VFSH200.114	Guide shaft	导轨轴	2	
20	VFSH200.021	Right connecting fra	右连接架焊合件	1	
21	VFSH200.016	oil pipe	油管	1	
22		Quick-change conne	快换接头	2	
23	VFMH125.015	Hydraulic ram	滑移油缸	1	
24	GB/T6172.1-2000	Bolts M18*1.5	螺母M18X1.5	1	
25	GB97.1-85	Washer18	垫圈18	2	
26	DIN985	lock Nut M18*1.5	锁紧螺母M18X1.5	2	
27	GB5783-86	Bolts M12*30	螺栓M12X30	9	
28	GB93-87	Washer12	垫圈12	17	
29	GB1152-89	nippleM8*1	油嘴M8X1	2	
30	UC207-Z	Bearing 90207	外球面球轴承90207座总成	2	
31	GB5782-86	Bolts M16*1.5*85	螺栓M16X1.5X85	20	
32	VFLH125.102	Y blade	刀	40	选装
33	VFLH125.101	Spacer	刀座隔套	40	选装
	VFLH125.103	Hammer	小锄	20	选装
34	DIN985	lock nut M16*1.5	锁紧螺母M16X1.5	20	
35	GB5783-86	Bolts M10*25	螺栓M10X25	4	
36	GB93-87	Wsher 10	垫圈10	4	
37	GB96-85	large Washer10	加大垫圈10	4	
38	FM120.00.199	PTO cover	传动轴罩	1	
39	GB5783-86	Bolts M12*35	螺栓M12X35	12	
40	GB96-85	lArge Washer12	加大垫圈12	5	
41	XH50.300Z.02W	Gear box	齿轮箱总成	1	
42	GB1096-79	KeyA10*65	键A10X65	1	
43	VD200.101	paper washer	纸垫	1	
44	GB70-85	Bolt M12x35	螺钉M12X35	4	

45	VFLH125.012	Transmission shaft c	传动轴轴管焊合件	1	
46		plug ZG3/8	ZG3/8通气塞	1	
47	ZBT32001.3-87	Plug ZG3/8-19	内六角锥形螺塞ZG3/8-19	1	
48	DIN985	Lock nut M14	锁紧螺母M14	4	
49	GB97.1-85	washer14	垫圈14	4	
50	VFMH125.108	Tension plate	张紧板	1	
51	GB5783-86	Bolt M14*40	螺栓M14X40	2	
52	GB893.1-86	Circle 33	挡圈33	1	
53	VFMH125.110	Connecting sleeve	连接套	1	
54	GB1096-79	key A10*45	键A10X45	1	
55	VFLH125.104	transmission shaft	传动轴	1	
56	GB/T278-94	Bearing 6207zz	轴承6207ZZ	1	
57	GB893.1-86	Circle72	挡圈72	1	
58	GB13871-94	oil seal 35*72*10	油封35X72X10	1	
59	JB/T7934Z3	reach 04 35*60	胀套REACH04型35X60	2	
60	VFMH125.107	big pulley	大皮带轮	1	
61	VFMH125.011	pulley cover weleme	皮带轮罩焊合件	1	
62	GB5782-86	Bolts M12*110	螺栓M12X110	1	
63	EF100.00.119	rubber cover	橡胶罩	1	
64	VFMH125.104	small pulley	小皮带轮	1	
65	GB/T1154-97	Belts B991	皮带B991	3	
66	GB13871-94	oil seal FB55*80*5	油封FB55X80X8	1	
67	VFMH125.103	Oil seal	油封套	1	
68	VFSH200.105	Notch baffle	槽口挡板	1	
69	VFLH125.011	hammer rotor	刀轴焊合件	1	
70	VFSH200.020	right roller connecti	右滚筒挂板焊合件	1	
71	GB5783-86	Bolts M10*35	螺栓M10X35	2	
72	GB97.1-85	Wsher10	垫圈10	2	
73	VFSH200.018	Roller	滚筒焊合件	1	
74	EF100.00.012	Flange bearing UC20	法兰座轴承UC205	2	
75	VFSH200.106	Scraper	刮泥板	1	
76	VFSH200.017	Left roller connectio	左滚筒挂板焊合件	1	
77	GB1152-89	nippleM6	油嘴M6	2	
78	GB/T70.3-2008	Bolt M8x25	内六角沉头螺钉M8X25	8	
79	VFLAH125.012	Rear bonnet weldme	后挡板焊合件	1	
80	VMA200.016	hang pipe weldment	穿杆焊合件	1	
81	GB5783-86	Bolts M14*35	螺栓M14X35	2	
82	DIN985	Lock Nut M8	锁紧螺母M8	1	
83	GB97.1-85	Wsher 8	垫圈8	1	
84	GB5783-86	Bolts M8*30	螺栓M8X30	1	
85	GB5786-86	Bols M16*1.5*50	螺栓M16X1.5X50	1	
86	GB6173-86	Bolts M16*1.5	螺母M16X1.5	1	
87	VFMH125.014	Hood	机罩焊合件	1	
88	RMC200.013	Right slide plate	右底座焊合件	1	
89	VFSH200.103	Baffle plate	挡板	12	
90	GB91-86	Cotter pin 4x32	开口销4X32	2	
91	RMC200.102	Baffle plates rod	挡板挂杆	1	
92	RMC200.012	left slide plate	左底座焊合件	1	